



L'Atlas invites

Hestia (Belgrade)

For the exhibition

Intimate/Outspoken

17.03.23—13.05.23

Press release
March 2023

4, cour de l'Île Louviers
75004 Paris

info@latlasparis.com
www.latlasparis.com

Free access
Wednesday to Saturday
from 12 to 7pm

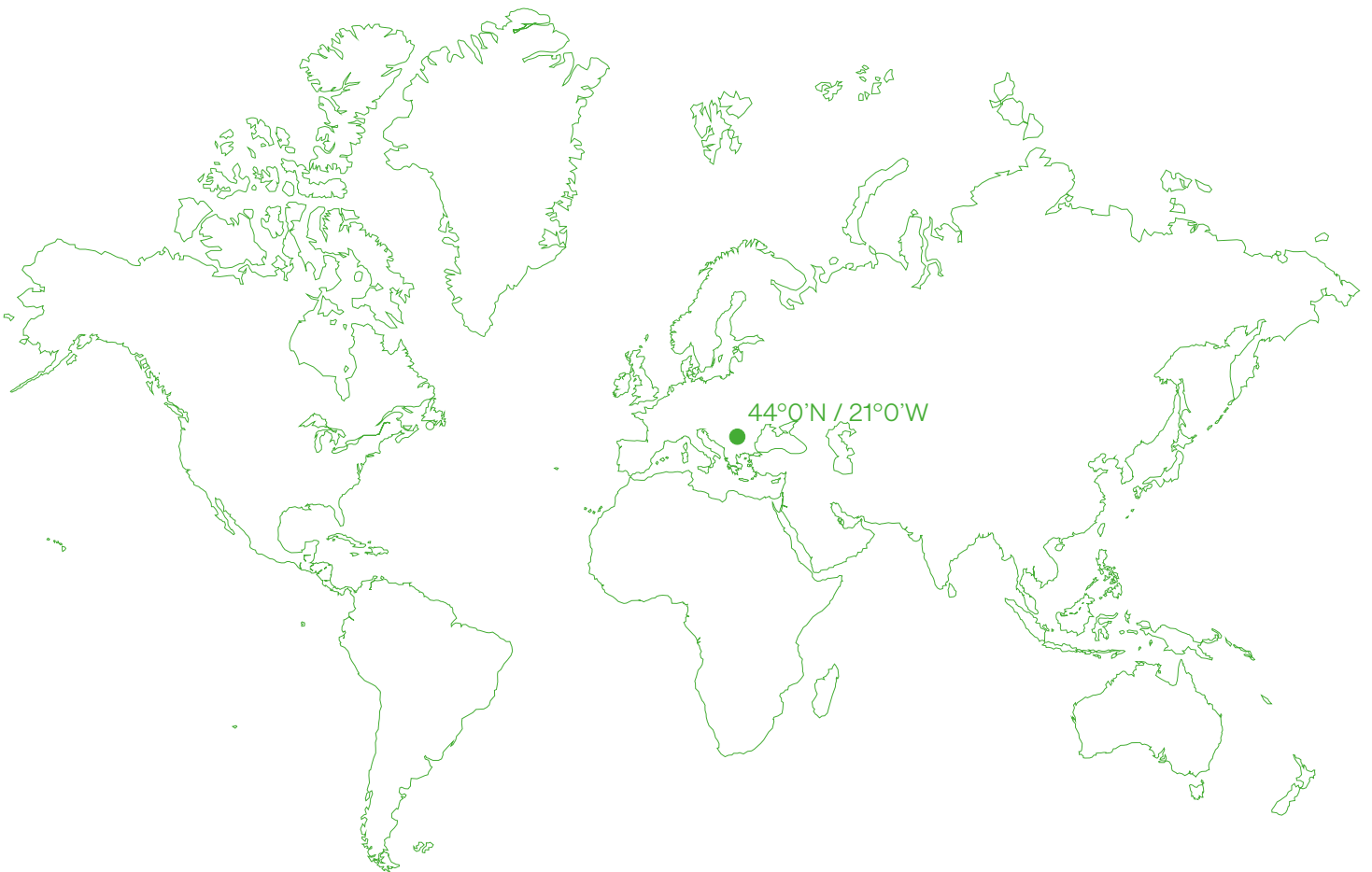
Contact:
Clémentine Dubost
cdubost@latlasparis.com
+33 (0) 1 43 31 91 84

with

Daniel G. Andújar, Patrick Hamilton, Radenko Milak,
Marge Monko, Nefeli Papadimouli, Lala Raščić and
Ana Vujović



Opening Thursday 16th March from 6 to 9pm



Hestia

Intimate/Outspoken

This spring, L'Atlas is thrilled to host Hestia, a Serbian gallery and artistic residence with which Emerige has collaborated on several occasions: two finalists of the Révélations Emerige have taken part in the residency since 2018. The exhibition *Intimate/Outspoken* highlights artistic practices from diverse geographies, giving voice to the inner worlds of the seven artists presented: Daniel G. Andújar, Patrick Hamilton, Radenko Milak, Marge Monko, Nefeli Papadimouli, Lala Raščić and Ana Vujović.

For their first exhibition in Paris, Hestia gallery wishes to exalt the quintessence of what they believe they share with their host: L'Atlas is a place where multiple geographies meet to present artistic disciplines and movements from around the world. The Western canon tends to define «world art» as a singular, homogeneous unit, while in reality a multitude of art worlds coexist. With this in mind, Hestia sheds light on practices from diverse regions with little exposure in Western institutions: Bosnia, Chile, Estonia, Greece, Serbia and Spain. The title *Intimate/Outspoken* further asserts the existence of the inner world of the artists presented and the need for their voices to be loud and carefully heard.



ANA VUJOVIĆ, *Ctrl + Alt + Del (2)*, 2020, emergency blanket, plaster, 70 x 56 x 27 cm

About L'Atlas

Supported by the Emerige Group, L'Atlas invites foreign galleries, foundations or non-profit organizations to exhibit one or more artists from contemporary scenes that are not well represented in France. L'Atlas proposes an original model: the artistic direction of its 5 annual exhibitions is ensured jointly by Emerige's artistic projects department and the invited partner. These exhibitions are coupled with a cultural programme (conferences, talks, readings, screenings or concerts) and with visits or workshops aimed at a wide audience. L'Atlas participates in the Emerige Group's ambitious programme of support for the contemporary art scene, with a programme focused mainly on international artists.

About Hestia

HESTIA (grec /'hɛstiə/, Ἑστία - "hearth, fireplace, altar"): in ancient Greek religion and mythology: Goddess of hearth, domesticity, architecture, family and the state. Hestia operates as an independent visual arts space at the crossroad of a commercial gallery and an art residency which includes an extensive library for residents and visitors. They (re)present emerging and established artists, whose research and work stems mainly from the fields of ethnography, anthropology, social sciences and history. Experiences and voices across different cultures and geographies give way for a vision on multiple worlds. Hestia's mission is to create and put forward ways of thinking in the field of contemporary visual arts related to the less known issues, geographies and peoples as well as the less canonic references, somehow away from the Western ideal and mainstream.



(1)



(2)



(3)

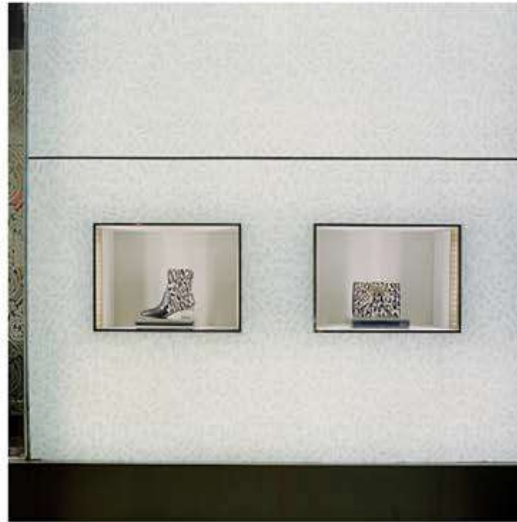
(1) PATRICK HAMILTON
Atacama #9, 2022, copper on
photograph, 104 x 144 cm

(3) LALA RAŠČIĆ
Gorgo Mask, 2023,
copper, 30 x 30 cm

(2) RADENKO MILAK
Surveillance, 2020, watercolour
on paper, 163 x 696 cm - 1 panel
(30 works in variable sizes)



(1)



(2)



(3)

(1) DANIEL G. ANDÚJAR
Error 01, error 02, error 03
 - *Pyramid of Capital System*
 series, 2018, robotic painting,
 acrylic on canvas 160 x 190
 cm (each)

(2) MARGE MONKO
Window Shopping 2014 - 2020,
 photolithograph, 23,2 x 29,7 cm,
 C-prints 60 x 60 cm (each)

(3) NEFELI PAPADIMOULI
Kind of Us, 2023, cuir, papier
 105 x 58 x 12 cm